

# Omnia



SWITCHES & SOCKETS



BRITISH STANDARD

# TECHNICAL

C A T A L O G U E





# New Colors Approach

*with 3 luxury colors*





# Style

## Meets Quality

*Pearl with Pearl Ring*



# Luxury

## MATT Black

*Black with Black Ring*





# Omnia

## Switches & Sockets SASO & British Standard

### Ordering Tip

To construct an order code, add the digits color code to the product code.

### Example :

**BW2M101** is the product code for a 10A 1W switch

**1** gang, **7X7** and **001** is the color code for white color with gold ring.

The order code will be: **BW2M101001**

### White



**001** White  
with Gold Ring



**003** White  
with Black Ring



**009** White  
with Chrome Ring

### Matt Colors



**214** Grey  
with Grey Ring



**216** Black  
with Black Ring



**225** Pearl  
with Pearl Ring



**205** Copper  
with Black Ring



**212** Copper  
with Gold Ring

### Beige



**101** Beige  
with Black Ring



**103** Beige  
with Gold Ring

### Gold



**202** Gold  
with Black Ring



**208** Gold  
with Gold Ring

### Red & Black



**206** Red  
with Black Ring



**600** Black  
with Gold Ring

### Silver



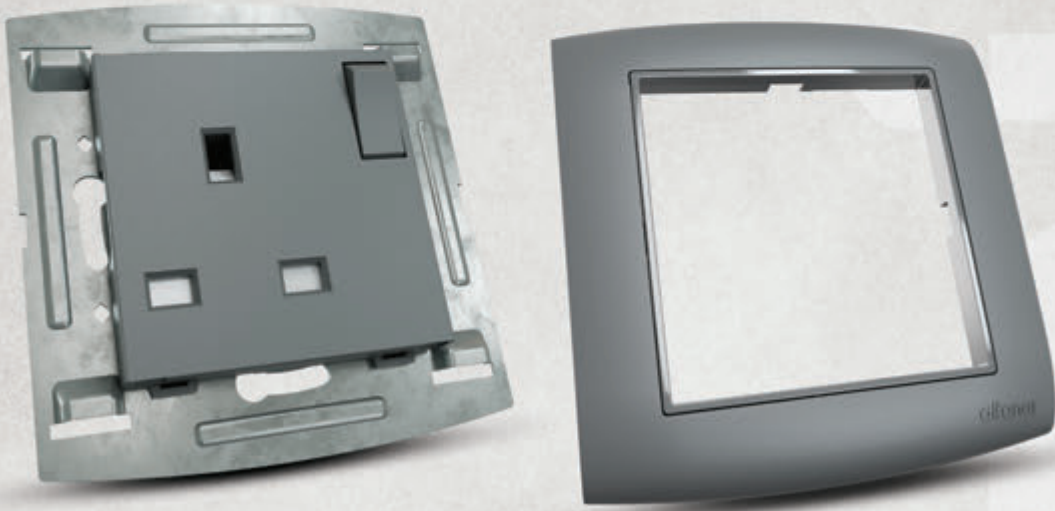
**200** Silver  
with Black Ring



**213** Silver  
with Chrome Ring

## Superior Quality

We ensure the superior quality of our products by using engineered robust thermoplastic that is durable, flexible, and has the resilience to withstand hard impacts, is flame retardant and built to last.



## Cover Plate

The screwless cover plate offers a clean, seamless, aesthetically pleasing, professional appearance making them a great choice for high-end commercial projects as well as for the home.



## Silver Alloy Contacts

Switching contacts are made of silver alloy to withstand resistive and inductive loads, ensuring excellent performance throughout its life.



## Convex Ball-end Screws

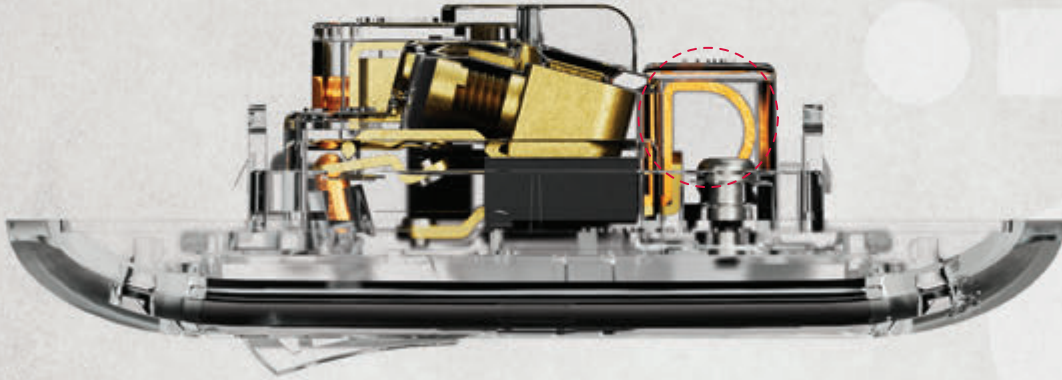
The coupling screws are manufactured with a convex shape ball-end to maintain the integrity of the wires and prevent splitting of the copper strands. These screws ensure a tight connection with the socket.





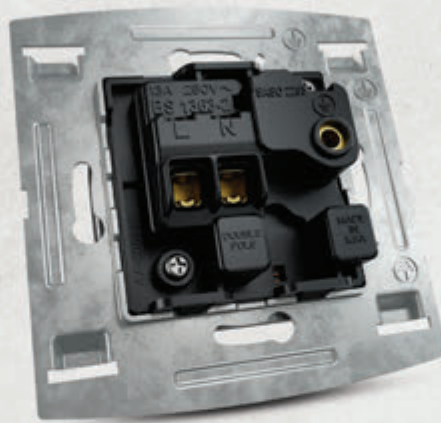
## Anti-Loosening Mechanism

The socket's inner copper contacts are made of phosphor bronze, skillfully crafted to maintain its flexibility and compression with the plug terminals, preventing loosening over time and extend the product's life.



## Solid Metal Frame

The solid metal structure eliminates the worry of product breakage during installation or dismantling, giving you confidence in its strength, stability, and durability, even under the toughest construction conditions.



## Double Pole Switch

**Omnia** sockets are equipped with a double pole switch designed to completely disconnect the electrical current at both socket openings. This safety feature ensures electrical security for both people and devices.



## High Conductivity Copper Cleats

*Omnia* sockets are made from the highest purity of copper alloys to ensure high efficiency transmission of electric current, with minimal heat generation. This extends the life of the product and reduces the risk of electrical fires.



## Protective Safety Shutters

*Omnia* socket outlets feature safety shutters to close off the contact openings for protection against the risk of electric shock. The tamper resistant shutters prevent children, and adults, from poking foreign objects into the socket. The spring-loaded shutters are designed to remain in a closed position until a plug is inserted.



# Lighting & Bell Switches

10AX (BSEN 60669-1)



BW2M101  
BW2M102



BW4M201  
BW4M202



BW2M103



BW2M401  
BW2M402



BW4M401  
BW4M402



BW2M201  
BW2M202



BW4M301  
BW4M302



BW2N164  
BW2N165



BW4N264  
BW4N265

# Lighting, Water Heater, Air Conditioner & Other Switches

20AX (BSEN 60669-1), 45A (BSEN 60669-1)



BW2M104



BW2N117-G3



BW2N181



BW4M418



BW2M117  
BW2M118



BW2M217  
BW2M218



BW4M318

**BW2M101**  
10AX 1Way Switch 1Gang,  
7x7

**BW2M102**  
10AX 2Way Switch 1Gang,  
7x7

**BW2M201**  
10AX 1Way Switch 2Gang,  
7x7

**BW2M202**  
10AX 2Way Switch 2Gang,  
7x7

**BW2M103**  
10A Bell Push 1Gang, 7x7

**BW4M203**  
10A Bell Push 2Gang,  
7x14

**BW2N164**  
10AX 2Way Switch 3Gang,  
7x7

**BW4M201**  
10AX 1Way Switch 2Gang,  
7x14

**BW4M202**  
10AX 2Way Switch 2Gang,  
7x14

**BW4M301**  
10AX 1Way Switch 3Gang,  
7x14

**BW4M302**  
10AX 2Way Switch 3Gang,  
7x14

**BW4M401**  
10AX 1Way Switch 4Gang,  
7x14

**BW4M402**  
10AX 2Way Switch 4Gang,  
7x14

**BW4N264**  
10AX 2Way Switch 6Gang,  
7x14

**BW2M104**  
20A Double Pole Switch  
with Indicator 1Gang, 7x7

**BW2M117**  
20A Intermediate Switch  
1Gang, 7x7

**BW2M118**  
20A 2Way Switch 1Gang,  
7x7

**BW2M217**  
20A Intermediate Switch  
2Gang, 7x7

**BW2M218**  
20A 2Way Switch 2Gang,  
7x7

**BW2N181**  
10A Curtain Switch, 7x7

**BW4N265**  
10AX 1Way Switch 6Gang,  
7x14

**BW2N117-G3**  
45A DP A/C Switch with  
Indicator 1Gang, 7X7

**BW4M318**  
20A 2Way Switch 3Gang  
7x14

**BW4M418**  
20A 2Way Switch 4Gang  
7x14

**BW2M401**  
10AX 1Way Switch 4Gang  
7x7

**BW2M402**  
10AX 2Way Switch 4Gang  
7x7

**BW2N165**  
10A X1Way Switch 3Gang  
7X7



# Media And Communication Socket Outlets

## Telephone & Data (BS 5733 where applicable)



BW2M106



BW2M206



BW2M137



BW2M237

## Television & Satellite (BS 3041)



BW2M109



BW2M110



BW2M800



BW2M209

## Blank Plate (BS 5733 where applicable)



BW2M108



BW2M208



BW2N156-G2

# Lighting Control Dimmer & USB Outlets

## Dimmer (BS 60669-2-1)



BW2M186



BW4M286



BW2M196



BW2M284-G2

**BW2M106**  
American Telephone Jack  
Socket 6P 6C 1Gang, 7X7

**BW2M206**  
American Telephone Jack  
Socket 6P 6C 2Gang, 7X7

**BW2M137**  
Data Socket Outlet  
CAT6 1Gang, 7x7

**BW2M237**  
Data Socket Outlet  
CAT6 2Gang, 7x7

**BW2M109**  
TV Socket 1Gang, 7X7

**BW2M110**  
Satallite Socket 1Gang, 7X7

**BW2M800**  
75 Ohm TV Socket  
+ Satellite Socket, 7X7

**BW2M209**  
TV Socket 2Gang, 7X7

**BW2M20637**  
Data Socket CAT6  
+ American Telephone  
Jack, 7x7

**BW2M210**  
Satellite Socket 2Gang, 7X7

**BW2M108**  
Blank Plate 1Gang, 7x7

**BW2M208**  
Blank Plate 2Gang, 7x7

**BW2N156-G2**  
16A 250V Card Switch  
with Time Delay 45 S  
1Gang, 7x7

**BW2M186**  
1000W/240V Light  
Dimmer Rotary Type  
1Gang, 7X7

**BW2M196**  
100W/240V Light  
Dimmer Rotary Type  
1Gang, 7X7

**BW4M286**  
1000W/240V Light Dimmer  
Rotary Type 2Gang, 7X14

**BW2M284-G2**  
2x 2.1A 5V DC 2Gang  
USB Charging Socket, 7X7

# Power & Special Solutions

13A (BS 1363)- 13A (SASO 2203), 13A (BS 1363-4)



BW2N112



BW4N212



BW2N114-G2



BW4N214-G2



BW2N124



BW4N2125



BW2N194



BW2N1111



BW2N195



BW2N1112



BW2N1122



BW2N1123



BW2M112

# Special Items for Export (Power Outlets)

16AX (BS 5733 / IEC 60884 where applicable)



BW2M116



BW2M216



BW2M121



BW4M221

## BW2N114-G2

13A Socket 1Gang, 7X7

## BW4N214-G2

13A Socket 2Gang, 7X14

## BW2N112

13A Double Pole Switch Socket 1Gang, 7X7

## BW4N212

13A Double Pole Switch Socket 2Gang, 7X14

## BW2N124

13A 240V Switch Socket with 20W USB A+C 7x7

## BW4N2125

13A 240V Switch Socket with 20W USB A+C 7x14

## BW2N1111

20A Switch Connection Unit with Flex-outlet & Indicator

## BW2N195

13A Fused Switch Connection Unit with Flex-outlet

## BW2N1112

20A Switch Connection Unit with Flex-outlet

## BW2M112

20A Cord Grommet 1Gang, 7x7

## BW2N194

13A Fused Switch Connection Unit with Flex-outlet & Indicator

## BW2M116

16A 2Pin Universal Socket 1Gang, 7x7

## BW2M121

16A Schuko Socket with Shutter 1Gang, 7X7

## BW2N1122

13A Fused Connection Unit with Indicator 7x7

## BW2N1133

13A Fused Connection Unit 7x7

## BW2M216

16A 2Pin Universal Socket 2Gang, 7x14

## BW4M221

16A Schuko Socket with Shutter 2Gang, 7X14









# Free Maintenance Service at Home for alfanar Products

Switches, Sockets, Distribution Boards, & Circuit Breakers



In 2023 **97%** Customer Satisfaction Rate  
on services delivered by our Technical Support Team

Customer Service  
**800-124-1333**

Scan the QR code  
to learn more about our  
free maintenance service







Scan the QR to download the catalogue

155479\_Mar.2024